

CORRUGATED STAINLESS STEEL WATER HEATER CONNECTOR



Peace of Mind for the Professional Plumber

TECHNICAL DATA



DESCRIPTION: 3/4 X 3/4" FIP X FIP Corrugated Stainless Steel Water Heater Connector X 18"

CONSTRUCTION: EPDM Washer - Brass Nut - POM Sleeve - Stainless Steel Corrugated Tube

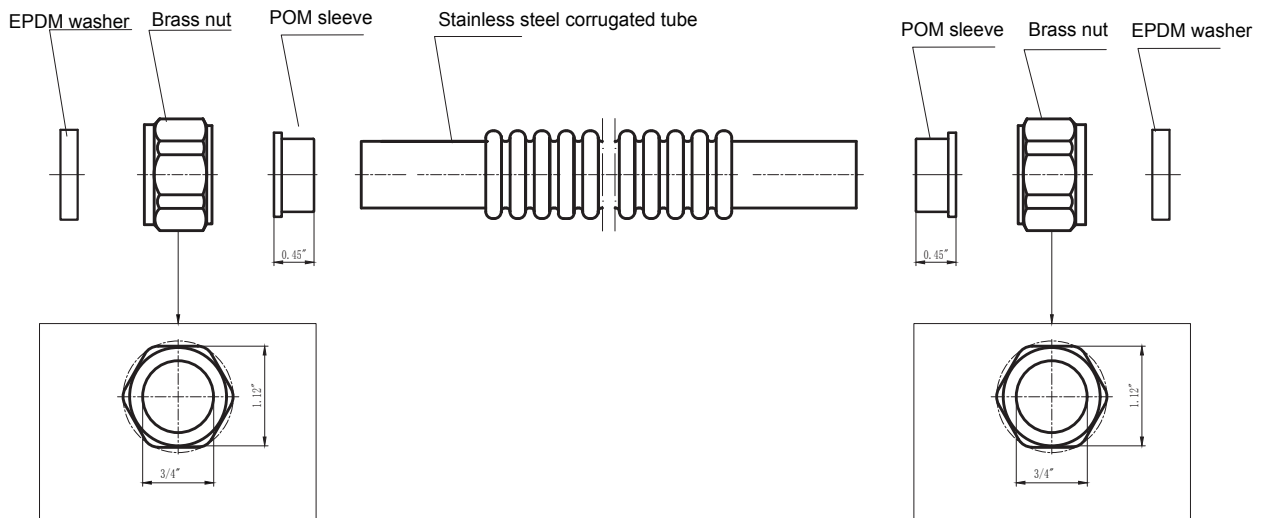
FINISH: Stainless Steel
Chrome Plated Brass Nuts

FLOW RATE: 2500PSI Max. Burst Pressure
180 Max Working Temp.

CODE APPROVALS:
UPC approval - meets NSF-61 standards

PART#	DESCRIPTION	FINISH
WHC-FIP-CSS-18	3/4 X 3/4" FIP X FIP Corrugated Stainless Steel Water Heater Connector X 18"	Stainless

ROUGH IN DRAWING



ALL DIMENSIONS SHOWN ARE NOMINAL